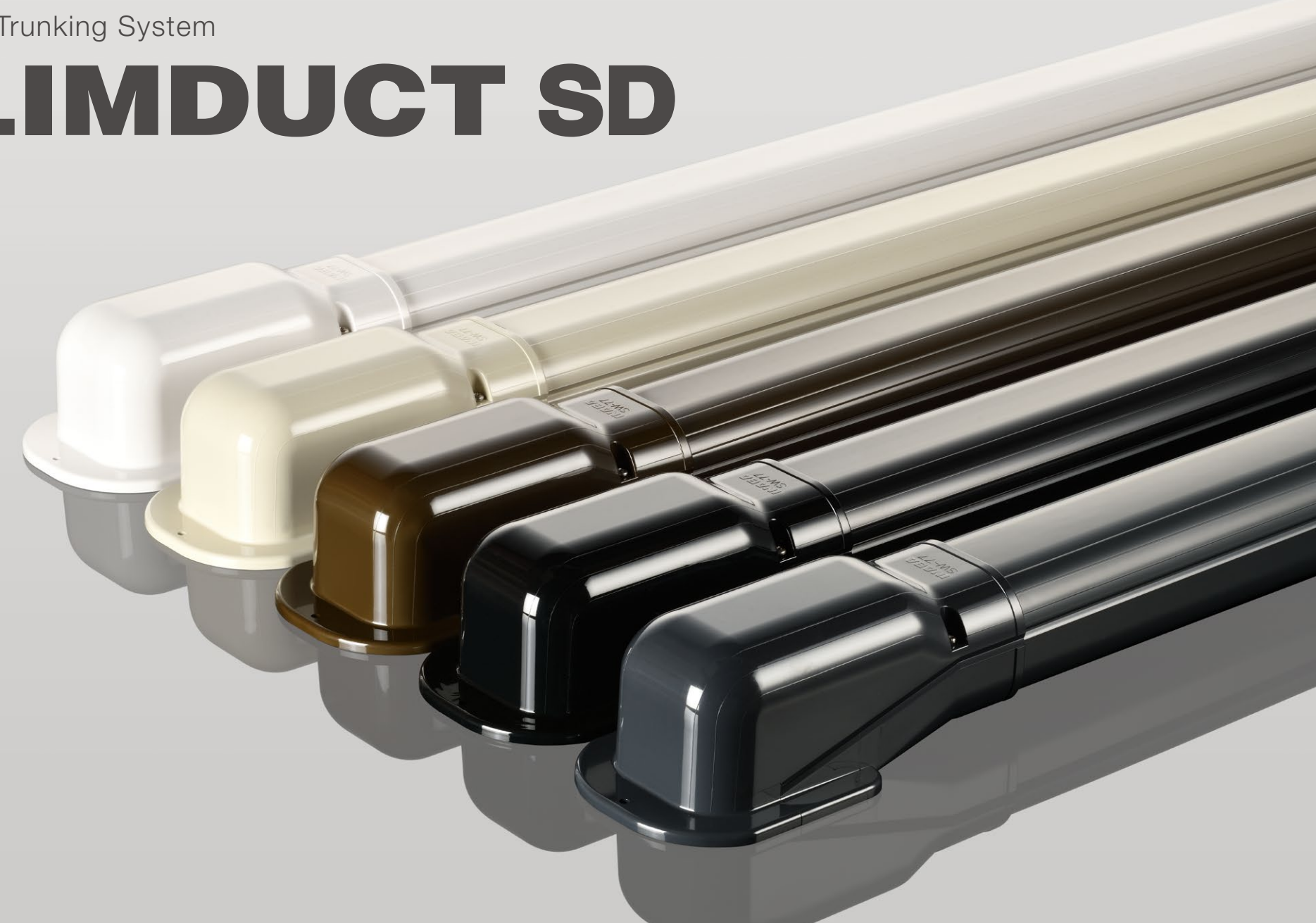


INABA DENKO

Premium Trunking System

SLIMDUCT SD



INABA DENKI SANGYO CO., LTD.

Overseas Sales Department INABA DENKO Div

10F, 4-11-14, Itachibori, Nishi-ku, Osaka, Japan, 550-0012

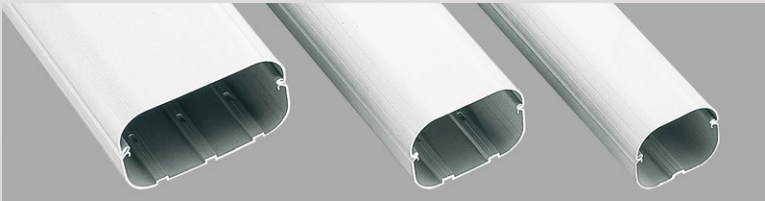
Tel: +81-(0)6-4391-1951 Fax: +81-(0)6-4391-1958

E-mail: sales-inabadenko@inaba.co.jp <https://www.inaba-denko.com/en/>



Premium trunking system SLIMDUCT SD provides ideal finishing touch to your AC/heat pump installation.

3 sizes



SD-140

SD-100

SD-77

5 colours



White
RAL9003

Ivory
RAL7044

Anthracite Gray
RAL7016

Brown
RAL6014

Black
RAL9011

Capacity Indication

Item	Insulation Thickness	Insulated Copper Tube Size												
		1/4"x3/8"	1/4"x1/2"	1/4"x5/8"	3/8"x5/8"	3/8"x3/4"	3/8"x7/8"	1/2"x1-1/8"	5/8"x1-1/8"	5/8"x1-1/4"	3/4"x1-1/4"	3/4"x1-1/2"	7/8"x1-1/2"	7/8"x1-5/8"
SD-77	10 x 10	1	1	1	1	–	–	–	–	–	–	–	–	–
	20 x 20	–	–	–	–	–	–	–	–	–	–	–	–	–
SD-100	10 x 10	2	1	1	1	1	1	–	–	–	–	–	–	–
	20 x 20	–	–	–	–	–	–	–	–	–	–	–	–	–
SD-140	10 x 10	3	2	2	2	1	1	1	1	1	1	1	1	1
	20 x 20	1	1	1	1	1	1	1	1	–	–	–	–	–

* Includes drain hose (OD16mm)

Temperature Range

-20~60°C

SLIMDUCT SD is fully provided with corrosion proofed stainless screws.



Screws are essential to keep the trunking protected permanently in any exterior environment.



Without the screw, duct cover could fall off due to UV deterioration, storm, pest, or any damageable elements.

Specific Features



Optional coloured screws will blend the system into indoor applications.



Flexible joint SF has more flexibility and workability than any other brand.



Specially designed cutter VD-2100 cuts both the cover and the base at the same time cleanly and safely.



Comes with most wide variety of fittings in the HVAC industry. Enables to complete the job for any complicated pipework.



Fittings come with a hook pin to prevent the cover from sliding off.

Fittings



SIF



SN



SCS



SW



SWA



SK



SKF



SKM



SKS



SC



SCF



SCM



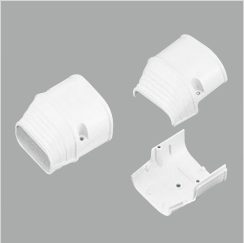
SJ



SP



SE



SEN



ST



SDR



SNA



SNB



SJA



SWC



SL